

CSA/ASC B652:23 provides evidence-informed guidance and best practices for the design, construction, and alteration of accessible homes for people with a range of physical, sensory, or cognitive disabilities.



Interior

For a living space to be truly accessible, its design must address a person's need for safety, independence, and dignity. People with disabilities may have

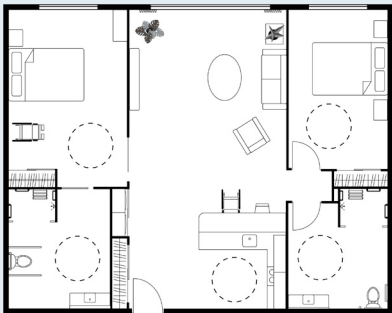
- need for more space to safely use a mobility device like a wheelchair or a walker;
- loss of sensation that can lead to burns from hot surfaces like cooktops or hot water in pipes or under sinks;
- reduced balance, strength, and coordination, which compromises reach and the ability to move heavy objects;
- less dexterity, which can make pinching and grasping challenging; and
- difficulty operating a device or appliance if instructions are not intuitive.

Dwelling Layout

Almost all residential building decisions can be seen through the lens of current and future accessibility. This can have a significant impact on all persons living with a disability, both today and tomorrow.

Forward-thinking modest changes in design and construction that improve safety, independence, and dignity can reduce stress for people with disabilities.

Tweaking traditional building methods at the initial planning phase can save time and money by reducing the need for expensive renovations in the future.



Exterior

There are many aspects of a building beyond the private dwelling that can be constructed in a way that helps people with disabilities live in safety and with independence. When designed to be barrier-free, public-use areas such as exterior entrances, common rooms, and parking areas help to create a safer environment for persons using assistive mobility devices or service animals.

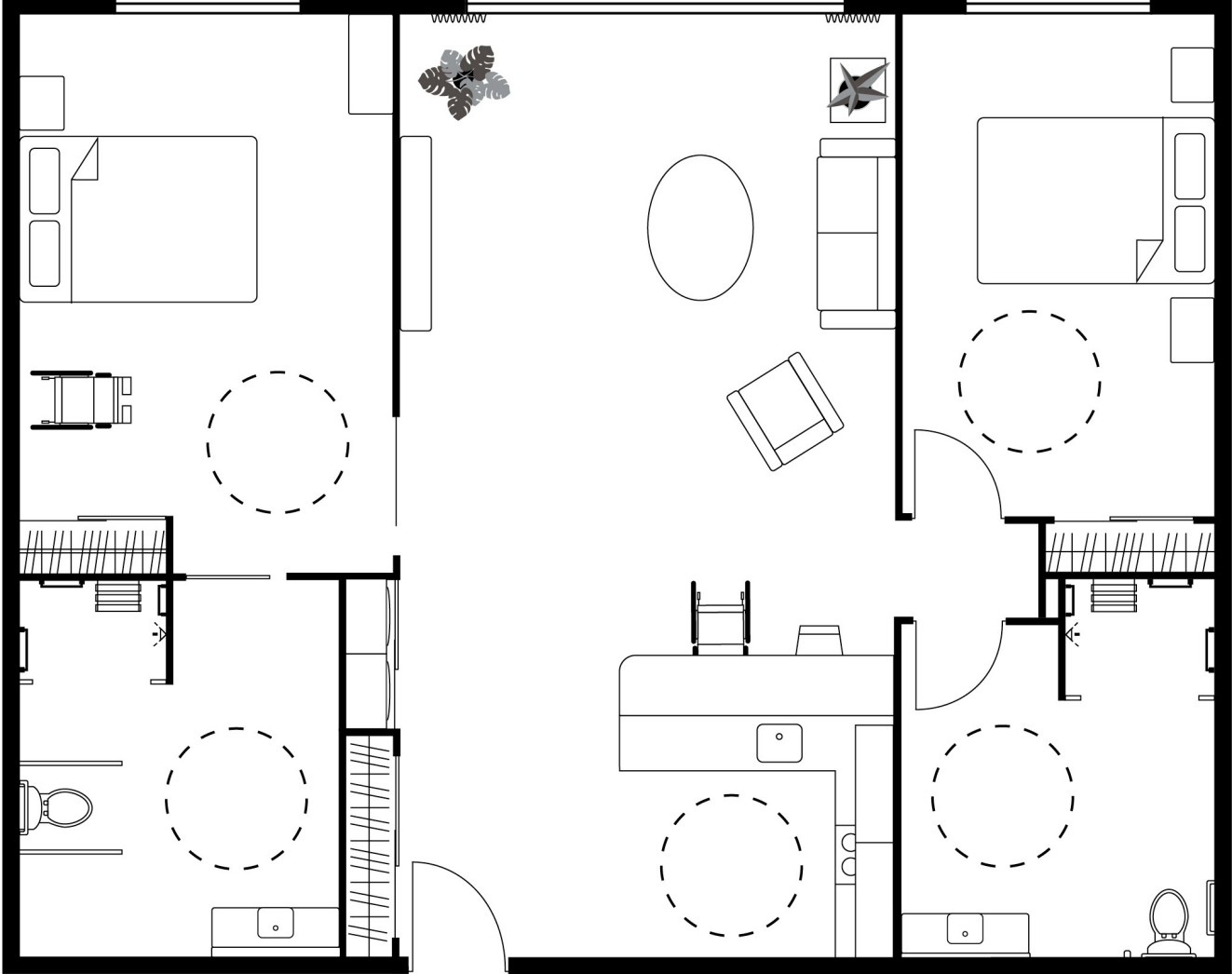


Interior



Click on each numbered area in the illustration for more information.

Dwelling Layout



Click on each numbered area in the illustration for more information.

Exterior



Click on each numbered area in the illustration for more information.



Get your copy of the Standard

CSA/ASC B652 has been developed to be used by anyone involved in the design, construction, or maintenance of living spaces meant to be accessible. This standard is to be used by all those involved in creating or adapting single or multi-family homes, multi-unit residences, hotels, or other dwellings that may be occupied by people with disabilities.

CSA/ASC B652:23 is available for no-fee view access and download on the CSA Store at:

<https://www.csagroup.org/store/product/CSA-ASC%20B652%3A23/>

CSA Group acknowledges that the development of this resource was made possible by the financial support of **Accessibility Standards Canada (ASC)**.



Accessibility Standards
Canada

Additional Resources

CSA Group
[csagroup.org](https://www.csagroup.org)

Accessibility Standards Canada
accessible.canada.ca

National Building Code of Canada
nrc.canada.ca

Rick Hansen Foundation
rickhansen.com

Technical Requirements

We recommend viewing this PDF file with the most recent version of **Adobe Acrobat Reader** to ensure full functionality (available for free [download here](#)).

If viewed in a web browser, the PDF file will have limited functionality.

<https://get.adobe.com/reader>